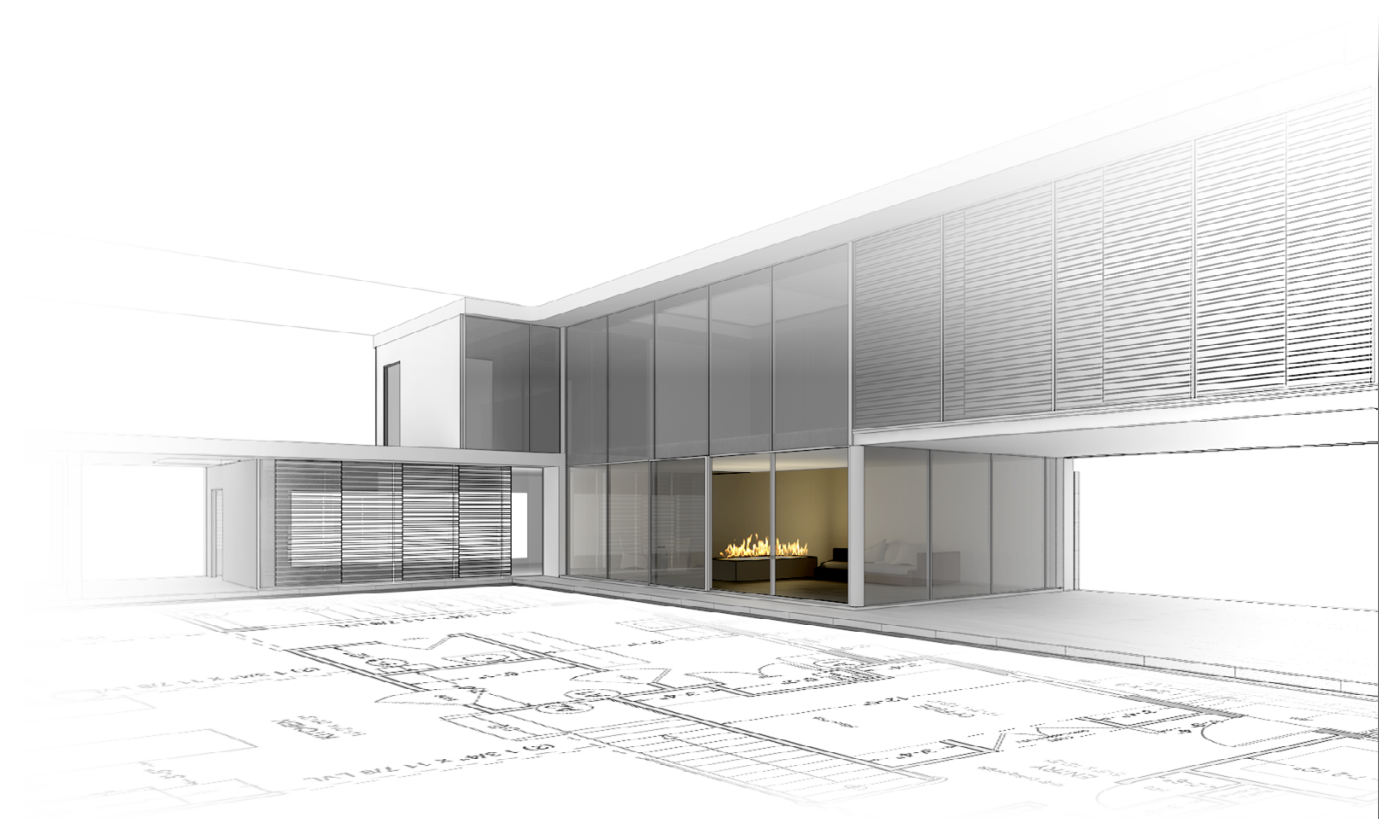


# modern

intelligent fire



# modern

## Simple Commerce

*compact in size and fully portable  
perfect match for cosy home decor*



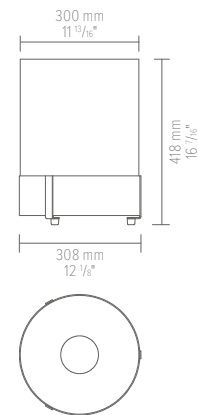
### FEATURES:

- No smoke
- No ash
- No chimney required
- No hard connection
- Eco-fuel
- Indoor use
- Certified
- Portable

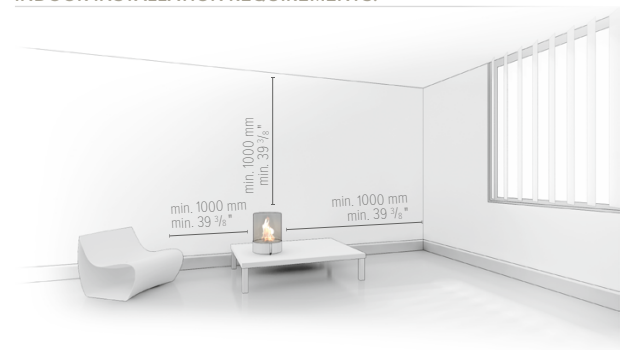
### TECHNICAL DATA:

Capacity: 1,5 L / [US] 0,39 gal / [UK] 0,33 gal  
Burning time: 3 - 4 h  
Heat output: 2,5 kW / 8547 BTU  
Net weight: 8,5 kg / 19 lbs  
Air circulation: min. 1/h  
Minimum room size:  
52 m<sup>3</sup> / 1836 ft<sup>3</sup> (20 m<sup>2</sup> / 215 ft<sup>2</sup> with a height of 2.6 m / 8.53 ft)  
Finish:  
CASING: stainless steel, hardened glass tube, BURNER: stainless steel

### DIMENSIONS:



### INDOOR INSTALLATION REQUIREMENTS:



[www.PLANIKAfires.com](http://www.PLANIKAfires.com)

download **PRODUCT INSTRUCTION**

